



2015 Romania

Milvus International Nature Photography Contest

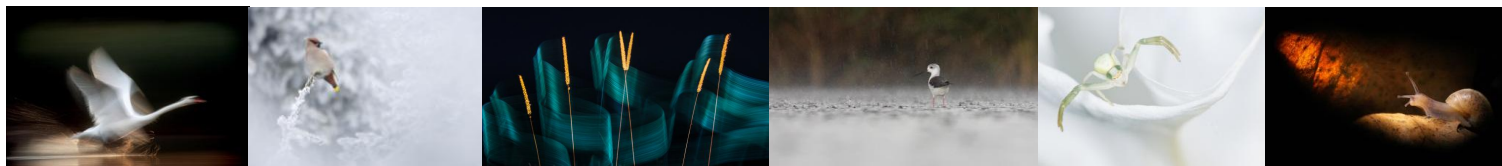


Sponsor



Partner





Invitation

Welcome to the 7th edition of the annual International Milvus Nature Photography Contest!

Milvus Group invites amateurs and professionals from all over the world to participate in this event.

Categories

1. A category – Free topic

Any color or black and white NATURE photo can be submitted (landscape, animal, plant, fungi, etc.), nothing man-made, except macro (see below).

2. B category – Macro

Any color or black and white NATURE macro photo can be submitted.

The jury

Tamás András AFIAP – artist photographer - jury president
Kerekes István EFIAP/p – artist and nature photographer
Dan Dinu AFIAP – nature and wildlife photographer

Competition management

The competition manager in 2015 is Judith Papp.
Please send your questions in writing to photocompetition@milvus.ro

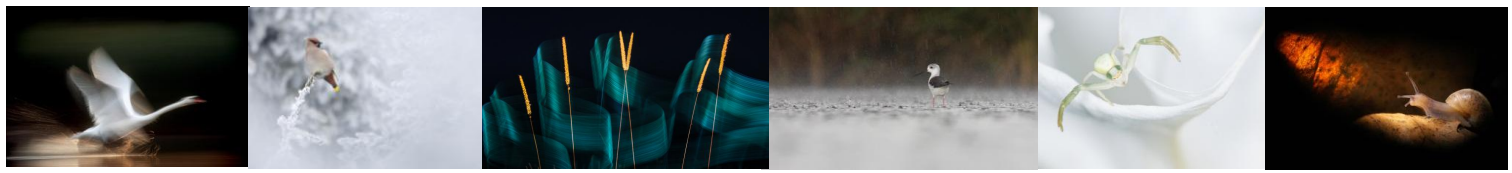
Send your pictures to:
Romania, 540600 Târgu Mureș, OP1 CP161
OR by e-mail to photocompetition@milvus.ro

Dates and deadlines

Photo submission deadline: **20th of June, 2015**
Judging: **27th of June, 2015**
Facebook voting: **1st – 10th of July, 2015**
Winners will be notified by email on 13th – 17th of July, 2015.

The exhibition of winning (and other chosen) photos will be organized in 17th – 29th of October, 2015 in Târgu Mures city (Romania). All participants will be notified about the exact time of the prize-handling ceremony.





Prizes

The First Place Winner of the contest will receive:

“Milvus” Trophy, Certificate of Merit, 500 Euro

The Grand Prize can be awarded to a single image from category free topic or macro.

In the separate categories, prizes for 1st, 2nd and 3rd place will be awarded.

First place will receive a Certificate of Merit and 200 Euro.

Second place will receive a Certificate of Merit and 100 Euro.

Third place will receive a Certificate of Merit and a gift-package offered by Milvus Group, Romania.

Public award (Facebook votes): a gift-package offered by Milvus Group, Romania and Certificate of Merit.

Best photographer from Romania: a Certificate of Merit and a gift-package offered by Milvus Group, Romania.

All Romanian participants will receive a Membership Premium Discount Card, offered by Photosetup and usable at <http://www.photosetup.ro> .

Participants

The contest is open to both professional and amateur photographers from anywhere in the world. The photos should have an authentic message and should be taken in **natural conditions, with the subjects being either wild animals or plants in their natural habitats or natural features of the landscape**. Each participant must guarantee that photographed animals were not disturbed (e.g. birds during nesting) or rare plants and habitats were not destroyed. These ethics will be of significance to the jury.

A maximum of **4 (four) pictures** can be sent for **each category**.

Pictures should be sent in JPEG format on CD **or** by e-mail (photocompetition@milvus.ro). Submitted photos should be numbered from 1 to 4/category identically with the Entry Form. Photo labeling will be recorded only on the **Entry Form**.

Eligible photo size: 2000 pixel, resolution 300 dpi and max. 3MB. The winners will be later asked to send their photos for the exhibition in original size.

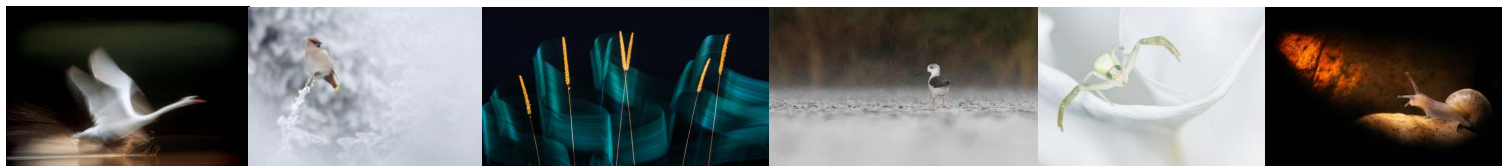
Authors must keep the original files, as produced by the camera, in RAW, TIFF, JPG, or DNG format, or as negatives or slide films. The author will be asked to send the original files if necessary. If the author didn't keep the RAW or DNG files, they will have to present the shots that followed and preceded the image in question. If the author fails to provide the jury with any of the previously mentioned files, the submitted photo might be disqualified.

Certain corrections of photographs are allowed, such as levels, curves, colour balance, hue/saturation, brightness and contrast. The correction of certain technical errors is also possible, such as the removal of distortions from scratches or dust on the lens, etc. However, the photos should remain as realistic and natural as possible, with limited digital alterations.

Corrections/modifications affecting only one part of the picture are not allowed. Images that were included in the winners list of previous editions of the Milvus Photo Contest are not eligible for resubmission.

Technical requirements





How to enter

To enter the contest, please post completed **Entry Form** (can be downloaded on www.milvus.ro) and your photos

- to postal address: Romania, 540600 Târgu Mureș, OP1, CP161
- **OR** by e-mail to photocompetition@milvus.ro

The CD's will be destroyed in 2 weeks after the judging process.

Milvus Group is a nature conservation NGO with a strong commitment to sustainability, therefore **we encourage using digital solutions**: internet and e-mail instead of CD and printed materials.

Entry Fee

Entry to one category is 10 EUR and for two categories 15 EUR.

The fee can be

- sent by post together with the CD and Entry Form **OR**
- paid via PayPal at photocompetition@milvus.ro **OR**
- via bank transfer on the following bank accounts.

Details:

Milvus Group, Tg.Mures, Romania

Bank name: ING Bank N.V. Amsterdam, sucursala București

Bank accounts: (for EUR) RO03 INGB 0000 9999 0179 9043
SWIFT code: INGBROBUXXX

Bank accounts (for RON): RO12 INGB 0000 9999 0170 3336

Liability

The organizing committee will seriously take care of the entries, but declines all responsibility in case of incidental damage, loss or robbery.

Copyright

By virtue of submitting an entry, the entrant certifies the work as his own and permits the organizer and sponsors to reproduce all or part of the entered material free of charge for publication and/or display in media related to the exhibition. The participation implies the acceptance of these conditions.

Sponsor



Official distributor in Romania for :

Manfrotto, Kata, Sigma, Gitzo, Hensel, Photoflex, Proline, Schneider B+W, Colorama, Visible Dust, Orbitvu and Cosmolight.

More information at www.photosetup.ro.

Partner



www.photolife.ro